

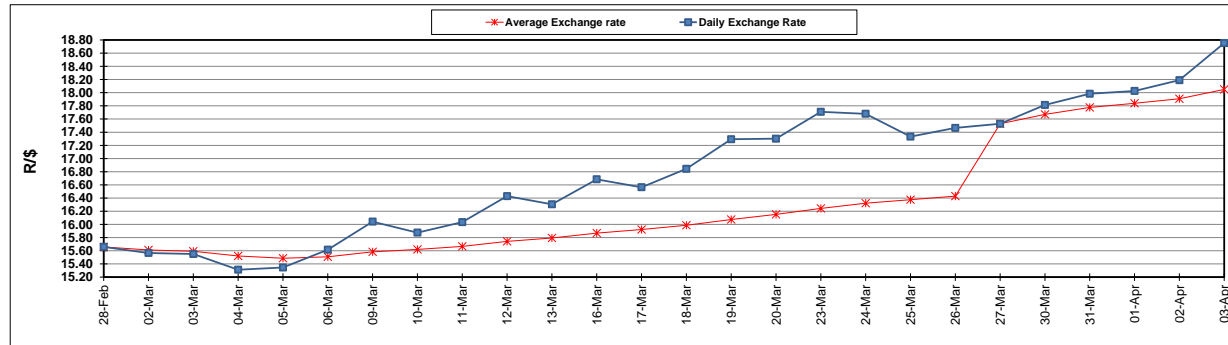
	PETROL 95 ULP	PETROL 93 ULP & LRP	DIESEL 0.05%	DIESEL 0.005%	ILL. PAR.
GAUTENG PUMP PRICE (SA c/l) AS FROM 01/04/2020	1,396.000	1,376.000	-	-	-
WHOLESALE PRICE (SA c/l) AS FROM 01/04/2020	-	-	1,269.560	1,273.960	672.828
SINGLE NATIONAL MAXIMUM RETAIL PRICE	-	-	-	-	840.000
BASIC FUEL PRICE - 03/04/2020 (SA c/l)	346.509	342.630	461.537	471.056	341.622
PRESS RELEASE CONTRIBUTION TO BFP 01/04/2020 - 03/04/2020 (SA c/l)	448.770	438.770	518.630	523.030	468.128
UNIT OVER/(UNDER) RECOVERY - 03/04/2020 (SA c/l)	102.261	96.140	57.093	51.974	126.506
AVERAGE BASIC FUEL PRICE 27/03/2020 - 03/04/2020	308.429	302.808	448.294	454.508	333.710
AVERAGE UNIT OVER/(UNDER) RECOVERY 27/03/2020 - 03/04/2020	249.941	239.563	152.836	151.522	233.419

ANALYSIS MOVEMENT OF AVERAGE OVER/(UNDER) RECOVERY

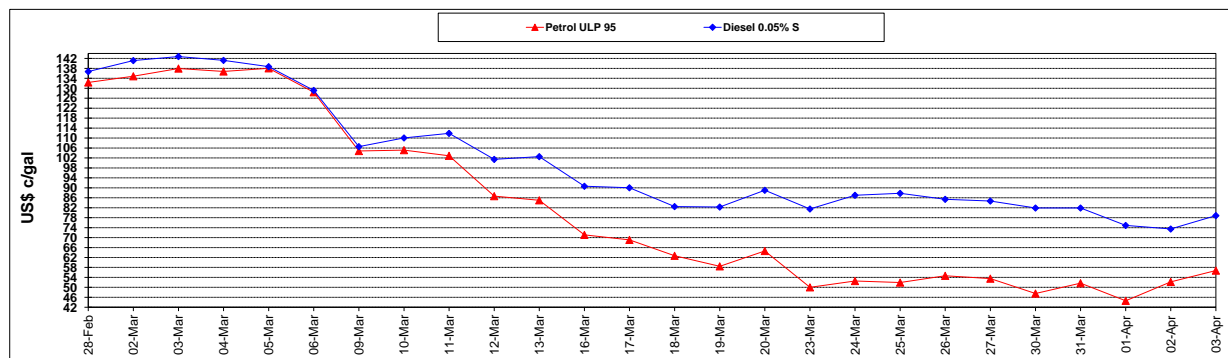
	PETROL 95	PETROL 93	DIESEL 0.05%	DIESEL 0.005%	ILL. PAR.
- MOVEMENT IN INTERNATIONAL PRODUCT PRICES	277.602	266.719	193.040	192.283	263.346
- MOVEMENT IN EXCHANGE RATE	(27.661)	(27.157)	(40.204)	(40.761)	(29.928)
AVERAGE UNIT OVER/(UNDER) RECOVERY 27/03/2020 - 03/04/2020	249.941	239.563	152.836	151.522	233.419

R/\$ EXCHANGE RATE - (R/\$18.7533 - 03/04/2020)

EXCHANGE RATE USED IN BASIC FUEL PRICE



INTERNATIONAL PRODUCT PRICES OF BASKET USED IN BASIC FUEL PRICE



BASIC FUEL PRICE IN SA CENTS PER LITRE

